



# **Morton Hospital DoN/Community- Based Health Initiative Request for Proposals**

**Issue Date:** March 16, 2022

**Virtual Drop-In Information Session:**

Thursday, March 31, 2022

1 – 2 pm (drop-ins welcomed anytime during this timeframe)

Zoom Meeting:

<https://zoom.us/j/95310683588?pwd=WUNmWWdoMHpicWhMQUN0eGFRd1FoQT09>

Meeting ID: 953 1068 3588

Passcode: CGNR5B

Submit questions in advance to [julie.masci@steward.org](mailto:julie.masci@steward.org)

Deadline for questions: 5 pm on Thursday, March 24

**Proposal Due Date:** April 18, 2022

Please submit completed proposal via email to Julie Masci ([julie.masci@steward.org](mailto:julie.masci@steward.org)) by 5:00 p.m. sharp on Monday, April 18.

*Late submissions are not eligible for funding.*

## Background:

The Morton Hospital Determination of Need (DoN) project aims to help fund groups in our community who are assisting the most vulnerable members of our community to make life-changing improvements in health, as well as address social and economic factors that impact overall well-being.

This DoN funding project aims to have a positive impact on **employment, education, housing** and/or **social environment outcomes** to preemptively address some of the most prevalent health issues in our community today: **mental health** and **substance use disorders**, with a focus on the youth population.

## Project Overview:

The proposed intervention calls upon grantees to implement a Mental Health First Aid (MHFA)\* program, designed as a course to help laypeople know how to assist individuals with mental health problems or those who are at risk for problems such as depression, anxiety, and substance use disorders. The course includes information about signs and symptoms of mental health problems and appropriate responses, as well as interactive activities using MHFA's five-step action plan. The program is adapted for various populations, including youth, older adults, college students, members of the military, and veterans.

Topics covered include anxiety, depression, substance use, disorders in which psychosis may occur, disruptive behavior disorders (including ADHD), and eating disorders.

Applicant organizations must apply a critical lens on their programming to identify potential opportunities to adopt a policies, systems and/or environmental (PSE) change approach to their proposed program, incorporating an "upstream" approach that that will address policies and/or community conditions before they result in poor outcomes around mental health and/or substance use disorder.

This strategy will improve access to mental/behavioral health services for individuals belonging to the priority populations noted on page 4.

*\*Mental Health First Aid. <https://www.mentalhealthfirstaid.org/>*

## Project Goals:

- Increase access to mental health and SUD interventions with a focus on preventing recurring mental health and/or SUD problems.
- Proactively identify individuals with mental health problems and those at risk for problems such as depression, anxiety, and substance use disorders (SUD), early on, by focusing on the youth population.
- Expand reach of program by encouraging a "train the trainer" approach where applicants and program facilitators would collaborate with community partners to incorporate the MHFA program into multiple organizations.
- Address racial and cultural inequities by empowering and encouraging program facilitators to focus on underserved populations.

## Scope of Work:

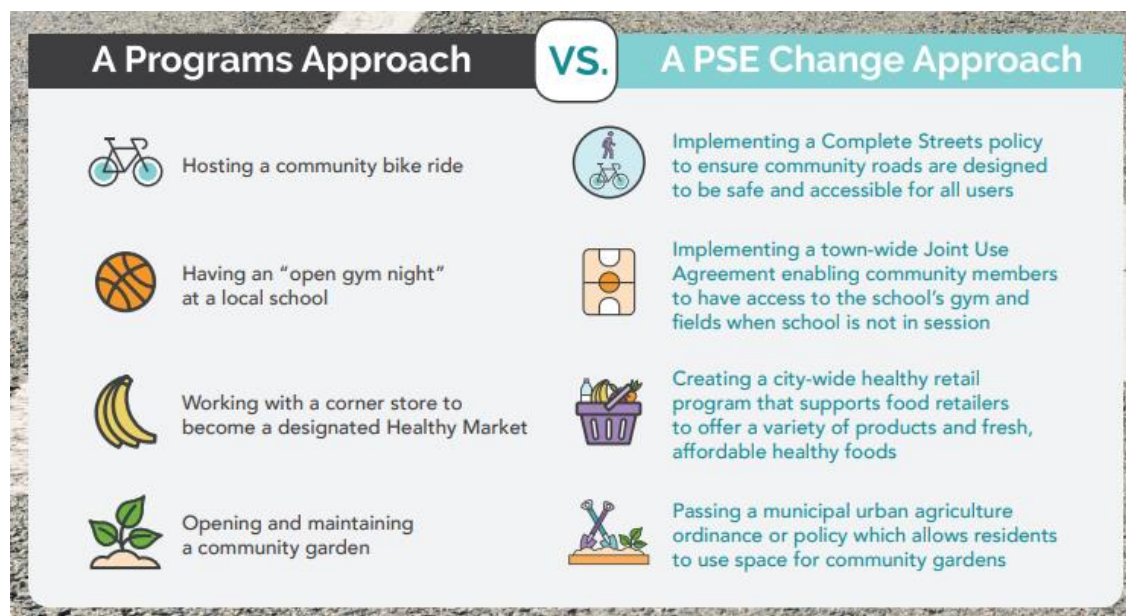
The Mental Health First Aid (MHFA) program course includes information about signs and symptoms of mental health problems and appropriate responses, as well as interactive activities using MHFA's five-

step action plan. The program is adapted for various populations, including youth, older adults, college students, members of the military, and veterans.

This intervention will prioritize those at an elevated risk of developing a mental health disorder and those who have an existing mental health disorder as well as prioritize those at an elevated risk of developing a SUD and those who have an existing SUD.

Applicants must demonstrate how the MHFA program will be incorporated into their organization, how it can be expanded to partner organizations, and how the program can incorporate a PSE change component. An example of such an approach would be the organization agreeing to create a new policy requiring all new staff members hired into positions in the organization to receive MHFA training for utilization in their role. Applicants are encouraged to think creatively to demonstrate compliance with this component of the program.

Examples of programs approach vs PSE change approach:



### Focus Population:

In the Morton Hospital 2018 Community Health Needs Assessment, low-income communities, community members of color and immigrants were identified as underserved populations.

Our race, gender identity, age, disability status, etc. influence the social environment that we experience. Our social environment impacts many mental and physical health outcomes, including mental health, violence, risk behaviors (tobacco and drug use), physical health and well-being, and disease morbidity and mortality. We are influenced by the social environment on three levels: interpersonal, community, and society (MDPH, 2017).

Across all three levels, systems of oppression such as structural racism and gender bias lead to social isolation, social exclusion, poor mental health, increased risk of violence, increased rates of poverty, higher hospitalizations, longer recovery times, and higher mortality rates for many conditions. Social isolation, social exclusion, racism, discrimination, and poverty disproportionately affect low-income communities and communities of color and all negatively impact many aspects of health. Communities of color are more likely to have lower levels of resources and connectedness with other neighborhoods

and higher levels of racial segregation. They also face more challenges when engaging in group action in neighborhoods to shift these conditions (Hobson-Prater T, 2012).

While not limited to this age group, priority will be given to applications centering youth and adolescent populations and experience.

MDPH. (2017). *Commonwealth of Massachusetts*. Retrieved from *Mass.gov*: [www.mass.gov/dph/2017statehealthassessment](http://www.mass.gov/dph/2017statehealthassessment)

Hobson-Prater T, L. T. (2012). *The Significance of Race for Neighborhood Social Cohesion: Perceived Difficulty of Collective Action in Majority Black Neighborhoods*. *Journal of Sociology, Social Welfare, XXXIX(1): 89-109*

### **Community Reach:**

The community defined by this document includes the neighborhoods of Taunton, Raynham, Berkley, Dighton, Middleborough, Lakeville and Norton, with a primary focus on Taunton given its size; racial, ethnic, and income diversity; and population Behavioral Health outcomes.

### **Existing Barriers**

- Lack of treatment programs for youth with mental health and SUD problems requiring long-term or a higher level of intervention
- Current lack of familiarity with the MHFA program in the Taunton community
- Lack of organizational capacity and infrastructure to support such a program
- Inability and lack of expertise required to appropriately supervise such a program

### **Evaluation Metrics and Criteria**

- Plan for sustainable PSE elements
- Demonstrated ability to address Racial Equity
- Number of individuals who will be engaged through the program
- Number of program facilitators who will be trained through the MHFA program
- Number of individuals who will be referred to alternative support programs
- Number of proactive interventions that will be completed

### **Eligibility and Submission Requirements**

- The funds will not pay for indirect costs.
- Grants cannot be used to pay any costs associated with insurance or other funds that will cover or reimburse for services rendered.
- Applicants must be from a current 501(c)(3)/509(a)(1) or municipal agency.
  - Grants will not be awarded to individuals
- Partnerships are encouraged but not required. If submitting as a partnership, there should be one primary applicant with supporting partners listed.
- An applicant's funding request must serve one or more of the neighborhoods and towns that include: Taunton, Raynham, Berkley, Dighton, Middleborough, Lakeville and Norton. Programs can serve additional communities in addition to one or more of the neighborhoods or towns

listed.

- An organization can only submit one application in response to this RFP.
- Applicants must demonstrate sound financial condition, reporting and controls.
- Applicants must demonstrate the ability to deliver on the funds awarded.
  - Awardees must deliver a year-end report no later than 11/30 of the calendar year recapping the fund use and results. If at any point the funds are not demonstrated to be used for the purpose which they were granted, Morton Hospital has the right to redistribute funding to another organization.
  - Awardees are expected to work with Morton Hospital's evaluation partner, Market Street Research, to gather information to demonstrate program impact. Market Street Research will provide support such as creation of customized data collection instruments for individual awardees and hosting of online questionnaires.
- Priority consideration will be given to organizations and community groups located in the impact area.

### **Proposal Format:**

- Cover sheet stating your organization's name, date submitted, contact information in case any follow up questions are needed
- Proposal must be written in a clean, legible font (i.e. Calibri, Arial, Times New Roman), sized 11- or 12-point font, and double spaced
- Proposal must be submitted by Monday, April 18<sup>th</sup>, 2022

### **Proposal Contents: Checklist**

- Application form
- 501(c)3 letter
- Budget
- References

### **Funds Available:**

Approximately \$260,000 is available to be disbursed over five years, and we expect to award 1-2 selected proposals.

### **Information Session:**

We strongly encourage you to attend the information session with any questions you may have. It may prove valuable to hear questions that others pose. The drop-in style information session will be held virtually, via Zoom, on Thursday, March 31 from 1 – 2 pm.

Zoom Link: <https://zoom.us/j/95310683588?pwd=WUNmWWdoMHpjCWWhMQUN0eGFRd1FoQT09>

Meeting ID: 953 1068 3588

Passcode: CGNR5B

Questions throughout the proposal period may be sent to [julie.maschi@steward.org](mailto:julie.maschi@steward.org), but please note there may be a 1-2 business day turnaround.

## Review Process and Notification of Funding Decisions

Applications will be evaluated on the basis of eligibility, ability to carry out the proposed work, community benefit and impact, financial soundness, compliance with the purpose of the funding, and adherence to terms and intent of the cooperation agreement (that will be issued upon notification of funding).

All submissions will be considered confidential, and their contents will not be disclosed to, or discussed with, persons outside the Committee, except to the extent that the Committee deems necessary to adequately evaluate the submissions.

The Morton Hospital Community-Based Health Initiative (CHI) Committee reserves all rights to make any decision they deem necessary to accomplish the purpose of the Fund – including, without limitation, to reject any and all proposals for any reason; to seek additional information or a revised proposal, and to amend this RFP at any time and for any reason.

The Committee will notify all applicants and awardees of the final decision May 2022. Funds will be disbursed over the course of a 5-year period, beginning by approximately June 2022.

**Contact:** Julie Masci | [julie.masci@steward.org](mailto:julie.masci@steward.org) | **Phone #:** 508-828-7015