

NOTES:

For more information about Diagnostic Imaging Services of Saint Anne's Hospital, please visit SaintAnnesHospital.org/diagnostic-imaging

Call location for hours and directions

Locations:

Complete Diagnostic Imaging Services

Saint Anne's Hospital
Ground Floor, 795 Middle Street, Fall River
508-674-5600 ext. 2300 • Fax 508-235-5636
Free valet parking

MRI satellite

The PrimaCARE Medical Center
289 Pleasant Street, Fall River,
508-235-5795

Ample free parking, and free valet parking available

Saint Anne's Hospital Diagnostic Imaging Satellite X-ray

119 Coggeshall Street
New Bedford, MA 02746
508-689-3900



795 Middle Street, Fall River, MA 02721
Main Number and Directions 508-674-5600

Diagnostic Imaging Services at Saint Anne's Hospital

For our patients and their physicians, Saint Anne's Diagnostic Imaging Services combines the expertise of board-certified radiologists with a comprehensive range of advanced imaging technology. Our fully digitized network of imaging technology assures the highest imaging quality with less time and inconvenience for patients, as well as rapid access to the results for physicians. Images can be viewed and sent via computer to multiple specialists within the hospital, across town to a physician's office or to other hospitals and specialists in the Steward Family network.

Our dedicated team of physicians and technologists is focused on providing the highest quality imaging and patient comfort. This extends to working with our youngest patients as well as others who require special considerations and appointment scheduling for imaging.

We offer a spectrum of services, including:

- Computerized Tomography (CT) scanning
- Digital X-ray
- Digital Mammography provided in our dedicated Robert F. Stoico/FIRSTFED Center for Breast Care
- Magnetic Resonance Imaging (MRI)
- Nuclear Medicine with CT capability
- PET/CT imaging
- Ultrasound

INTERPRETER SERVICES AVAILABLE

Portuguese - Português

Fala Português? Vamos oferecer-lhe um intérprete gratuito.

Spanish - Español

¿Habla español? Le proporcionaremos un intérprete sin costo alguno para usted.

Steward Health Care complies with applicable Federal and State civil rights laws and does not discriminate on the basis of race, color, national origin, gender, sexual orientation, religion, disability or age.

Digital Imaging: A High-Tech Change for Better Care

Digital imaging creates a "filmless" environment that permits rapid viewing of pictures and secure transmission to physicians whether they are in the hospital, their nearby practice or a specialist located miles away. Digital images are high quality, environmentally friendly and easier to access via PACS (Picture Archiving Communication System). Saint Anne's was the first area hospital to adopt this innovation as part of a Steward Health Care system effort to link our family of hospitals and their expertise.

The PACS system is part of a patient's secure and confidential electronic medical record, which provides for improved care through integration of various tests and reports all in one easily-retrievable location.

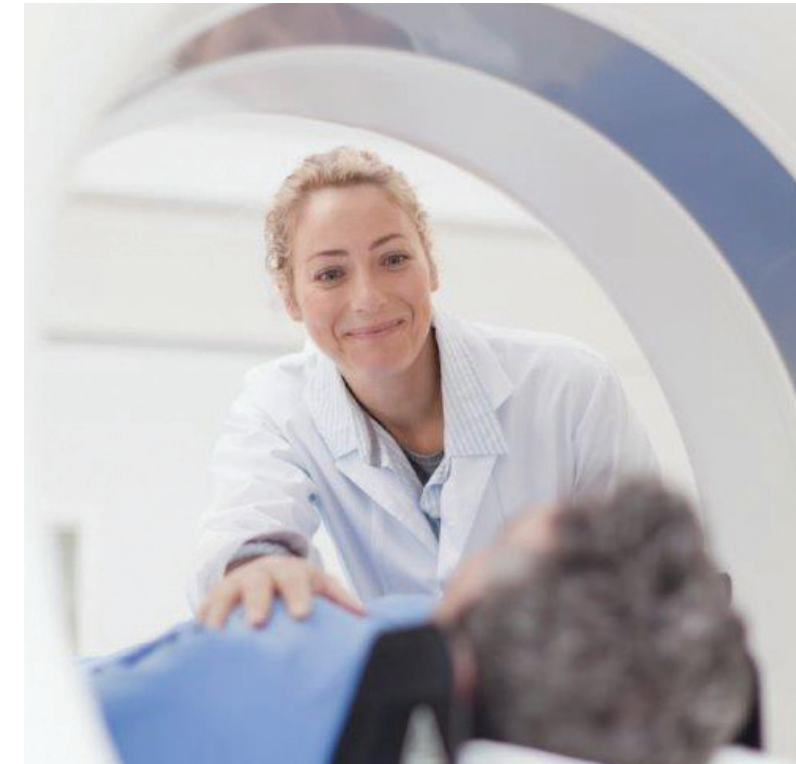
Care Agreement:

You have the right to help plan your care. To help with this plan, you must learn about your health condition and how it may be treated. You can then discuss treatment options with your caregivers. Work with them to decide what care may be used to treat you. You always have the right to refuse treatment.

SaintAnnesHospital.org



DIAGNOSTIC IMAGING SERVICES



CT Scan

PATIENT INFORMATION



Accredited by the American College of Radiology



Understanding Your Exam

What is a CT Scan?

A computed axial tomography (tuh-MAH-gruh-fee) scan, also called a “CT” or “CAT” scan, is a test that takes pictures of the inside of the body. CT exams are especially good for showing bone, soft tissue, and blood vessels. These pictures are taken in slices. Each picture or “slice” shows only a few layers of body tissue at a time. By viewing these images, your caregiver can more easily find and diagnose problems in your body.

Why do I need a CT exam?

A CT exam is used to diagnose a multitude of diseases, both acute and chronic. Because of the way CT images are produced, they have advantages over normal X-ray images in distinguishing between different types of soft tissue (for example, the liver and kidneys). In addition, multiple CT images can be combined to produce a 3D (three-dimensional) picture that could provide extra information. CT exams can be used to verify the presence or absence of tumors, infection, or other changes in the body from trauma or other conditions.

The Day Before The Exam

- Some CT exams may require an oral contrast liquid to help your body parts show up better in the pictures. You will be provided instructions on when and how to take the oral contrast liquid if it is necessary prior to the CT exam.

The Day Of The Exam

- Wear comfortable clothing without metal zippers or snaps. Remove anything that might interfere with the CT exam pictures, such as eyeglasses, earrings, necklaces, or hairclips.
- Before the test, the CT technologist will ask you some screening questions, including allergies you may have, if you could be pregnant, what medical conditions you have and medicines you take. Caregivers may also need to know if you have ever had a reaction to IV contrast. These questions help caregivers confirm that it is safe for you to have a CT exam. A CT exam can hurt an unborn baby, so be sure to tell caregivers if you might be pregnant. Please bring a list of your medicines or their containers to your appointment.

During The Test

You may be asked to put on a gown, then caregivers will help you lie down on the CT scan table. You will lie still while the CT exam is being done so the pictures are clear. The body part being tested may be kept in place with a cradle or straps to hold it very still. During the test, the table will move into the ring of the machine. You may be asked to hold your breath and not move for a brief moment during imaging. The table may keep moving farther into the ring during the test. This test does not hurt. A CT exam usually takes about 15 to 30 minutes.

For other types of CT exams, you may be given an IV contrast that is put into your vein. When the contrast is injected, you may feel warm or flushed or have a metal or salty taste in your mouth, or you may feel sick to your stomach. Tell your caregiver if you feel like you are going to vomit (throw up). This sensation lasts only 1 to 2 minutes.

After You Leave

- Always take your medicine as directed by your physician.
- Drink 6 to 8 glasses of liquid.
- If you are taking antibiotics (an-ti-bi-ah-tiks), take them until they are all gone, even if you feel better.

Call your physician if:

- you have trouble breathing
- you have any questions or concerns about your injury, illness, medicine or the CT scan.

**Appointment Scheduling:
508-235-5339**

Appointment Scheduling

508-235-5339

Monday-Friday 8 am - 6 pm

Your physician's office will schedule your CT Scan. Our Scheduling staff are able to assist with all scheduling needs, as well as provide patients and physician practices exam preparation instructions when applicable.

If you are unable to keep your appointment and need to reschedule or if you wish to cancel your appointment, please contact us as soon as possible. A 24-hour notice would be greatly appreciated.

Pre-Registration By Phone: 508-235-5674

To expedite your visit, please contact our Patient Assistance Center to pre-register for your exam. If we do not hear from you, a member of our staff will attempt to reach you. Please ensure your physician has your most up to date contact information. During the registration process we can assist you with your co-pay, coinsurance, and deductible.

Once you have pre-registered, you can arrive on the scheduled day and time and go directly to the Diagnostic Imaging Services location.

The Day Of Your Exam

- Use the Valet Parking services where available, Monday through Friday, and reduce the amount of time you spend looking for parking. It's free, and you can pick up your car at the entrance when you are finished with your appointment. No long walks! Hours vary by location.
- For exams scheduled at the hospital: If you have not pre-registered, please go to Patient Registration, located near the main entrance to the hospital, 30 minutes prior to your scheduled exam appointment to be registered for your exam.
- If you are diabetic, inform staff and take your medications as you would normally.
- We want our patients to be as comfortable as possible while having tests performed. However, we ask that you not bring children with you unless you have an adult to watch and care for them while you are having your procedure.
- Pediatric patients must be accompanied by either a parent or legal guardian in order to receive care.