

NOTES:

For more information about Diagnostic Imaging Services of Saint Anne’s Hospital, please visit SaintAnnesHospital.org/diagnostic-imaging

Call location for hours and directions

Locations:

Complete Diagnostic Imaging Services

Saint Anne’s Hospital
Ground Floor, 795 Middle Street, Fall River
508-674-5600 ext. 2300 • Fax 508-235-5636
Free valet parking

MRI satellite

The PrimaCARE Medical Center
289 Pleasant Street, Fall River,
508-235-5795

Ample free parking, and free valet parking available

Saint Anne’s Hospital Diagnostic Imaging Satellite

X-ray

119 Coggeshall Street
New Bedford, MA 02746

Saint Anne’s Hospital
A STEWARD FAMILY HOSPITAL



795 Middle Street, Fall River, MA 02721
Main Number and Directions 508-674-5600

Diagnostic Imaging Services at Saint Anne’s Hospital

For our patients and their physicians, Saint Anne’s Diagnostic Imaging Services combines the expertise of board-certified radiologists with the area’s most comprehensive range of advanced imaging technology. Our fully digitized network of imaging technology assures the highest imaging quality with less time and inconvenience for patients, as well as rapid access to the results for physicians. Images can be viewed and sent via computer to multiple specialists within the hospital, across town to a physician’s office or to other hospitals and specialists in the Steward Family network.

Our dedicated team of physicians and technologists is focused on providing the highest quality imaging and patient comfort. This extends to working with our youngest patients as well as others who require special considerations and appointment scheduling for imaging.

We offer a spectrum of services, including:

- Computerized Tomography (CT) scanning
- Digital X-ray
- Digital Mammography provided in our dedicated Robert F. Stoico/FIRSTFED Center for Breast Care
- Magnetic Resonance Imaging (MRI)
- Nuclear Medicine with CT capability
- PET/CT imaging
- Ultrasound

INTERPRETER SERVICES AVAILABLE

Portuguese - Português

Fala Português? Vamos oferecer-lhe um intérprete gratuito.

Spanish - Español

¿Habla español? Le proporcionaremos un intérprete sin costo alguno para usted.

Steward Health Care complies with applicable Federal and State civil rights laws and does not discriminate on the basis of race, color, national origin, gender, sexual orientation, religion, disability or age.

Digital Imaging: A High-Tech Change for Better Care

Digital imaging creates a “filmless” environment that permits rapid viewing of pictures and secure transmission to physicians whether they are in the hospital, their nearby practice or a specialist located miles away. Digital images are high quality, environmentally friendly and easier to access via PACS (Picture Archiving Communication System). Saint Anne’s was the first area hospital to adopt this innovation as part of a Steward Health Care system effort to link our family of hospitals and their expertise.

The PACS system is part of a patient’s secure and confidential electronic medical record, which provides for improved care through integration of various tests and reports all in one easily-retrievable location.

Care Agreement:

You have the right to help plan your care. To help with this plan, you must learn about your health condition and how it may be treated. You can then discuss treatment options with your caregivers. Work with them to decide what care may be used to treat you. You always have the right to refuse treatment.

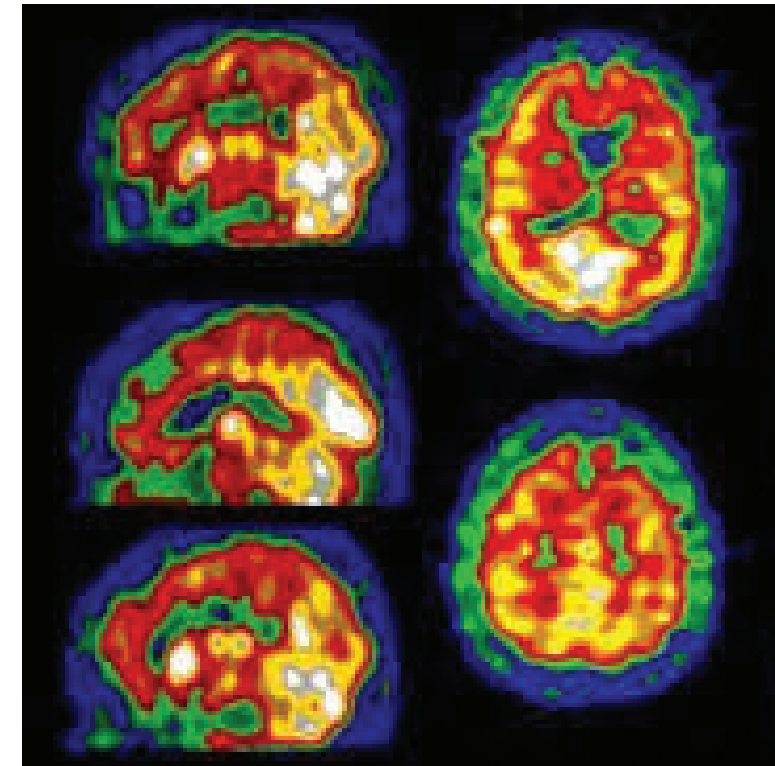
SaintAnnesHospital.org

Saint Anne’s Hospital

A STEWARD FAMILY HOSPITAL

Steward

DIAGNOSTIC IMAGING SERVICES

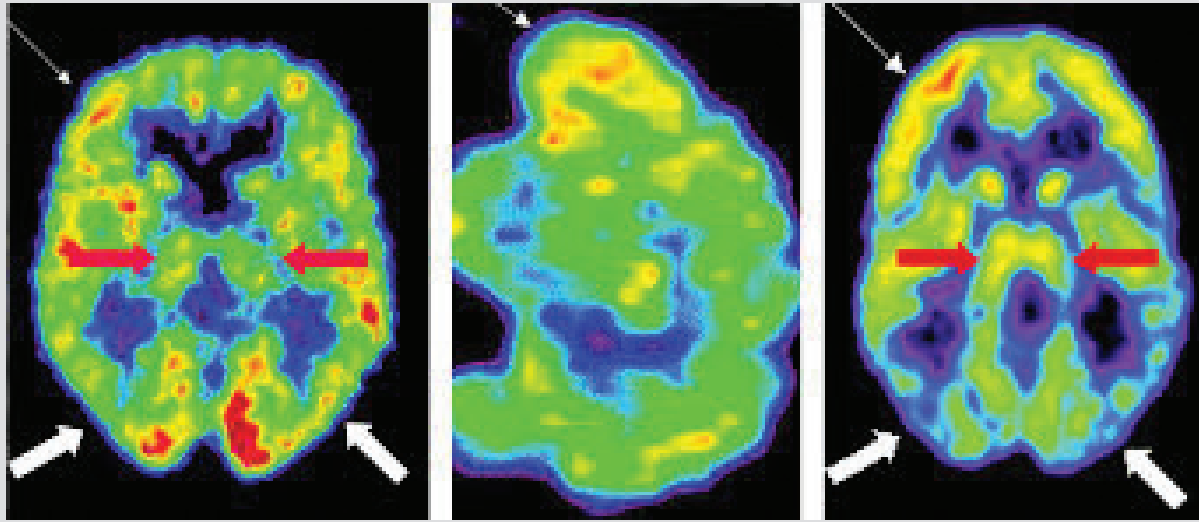


Brain Scan (SPECT)

PATIENT INFORMATION



Accredited by the American College of Radiology



Understanding Your Exam

What is an SPECT?

A brain single photon emission computed tomography (SPECT) scan is a test that shows how and where blood is flowing in your brain. It gives caregivers a picture of how your brain works. This test is a type of nuclear (NEW-klee-er) medicine scan, also called neurologic (ner-ih-LOJ-ik) imaging.

Why do I need an SPECT?

A brain SPECT may be done to see if an abnormal process is happening in your brain. This test may also be done to find or monitor any of the following medical conditions:

- Alzheimer’s disease, or other types of dementia (duh-MEN-shuh)
- Cancer or stroke
- Chronic fatigue syndrome (extreme tiredness)
- Head trauma (injury)
- Memory loss, or migraine headaches
- Neurological diseases, such as encephalitis (n-SEF-uh- LI-tis), epilepsy, Huntington’s disease, hydrocephalus (hi-dro-SEF-uh-lus), and Parkinson’s disease.
- Problems with blood flow in the brain.
- Schizophrenia (skiz-oh-FRE-nee-ah)
- Toxic encephalopathy (n-sef-uh-LAW-puh-thee)

Who should not have this test?

Tell your caregiver before the test if you are pregnant, or think you might be. Caregivers may suggest waiting to have the test until after your baby is born. Tell caregivers if you are breastfeeding. They may suggest waiting to have the test until after you have finished breastfeeding your baby. This is suggested so that your baby will not receive any of the radioactive tracer.

The Day Before The Exam

What should I do to get ready?

You do not have to do anything to prepare for the scan. You may eat, drink fluids and take any medicines that you take regularly.

The Day Of The Exam

How is a brain SPECT performed?

- Caregivers will ask you to go to the bathroom before the scan begins. You should do this because you will need to lie down for about 1 hour. You will be asked to lie down and rest in a dimly lit room for about 15 minutes. A caregiver will put a substance called a radioactive tracer into a vein, usually in your hand or arm. You will rest for about 45 minutes in the dimly lit room to allow the tracer to flow through your brain.

- Caregivers may have you place your head in a special holder and wrap it with an elastic bandage. This may be done to hold your head still.
- The tracer decays (breaks down) to a single piece called a photon. The scan is taken with a gamma camera that rotates around to track the photons. A computer makes pictures of different areas of your brain from the scan. It usually takes about 30 minutes to complete the scan.

What will I feel during the scan?

You may feel discomfort when the tracer medicine is put in your vein. The scan itself is painless, but you may be uncomfortable lying still during the scan. Caregivers may offer you medicine, to help you lie still.

After You Leave

You may continue activities, eat, drink, and take your usual medicines as you did before the test. Drink plenty of fluids, such as water and juices to help flush the tracer out of your body. The tracer leaves your body quickly through your urine.

What are normal and abnormal results?

All the cells in a normal brain SPECT will look the same. An abnormal scan can have “hot” or “cold” spots. A hot spot is an area that looks black because brain cell growth is more active. Because of this growth, more of the tracer is absorbed. A cold spot is an area that looks lighter or white because the brain cells are less active. These areas absorb less of the tracer.

What are the risks?

You may feel dizzy and unsteady when getting up from a sitting or lying position after the scan. The place where the medicine was given could bleed, become red, swollen, painful, or infected. Call your caregiver if you are worried or have questions about your medicine or care.

Appointment Scheduling

508-235-5339

Monday-Friday 8 am - 6 pm

Your physician’s office will schedule your brain scan. Our Scheduling staff are able to assist with all scheduling needs, as well as provide patients and physician practices exam preparation instructions when applicable.

If you are unable to keep your appointment and need to reschedule or if you wish to cancel your appointment, please contact us as soon as possible. A 24-hour notice would be greatly appreciated.

Pre-Registration By Phone: 508-235-5674

To expedite your visit, please contact our Patient Assistance Center to pre-register for your exam. If we do not hear from you, a member of our staff will attempt to reach you. Please ensure your physician has your most up to date contact information. During the registration process we can assist you with your co-pay, coinsurance, and deductible.

Once you have pre-registered, you can arrive on the scheduled day and time and go directly to the Diagnostic Imaging Services location.

The Day Of Your Exam

- Use the Valet Parking services where available, Monday through Friday, and reduce the amount of time you spend looking for parking. It’s free, and you can pick up your car at the entrance when you are finished with your appointment. No long walks! Hours vary by location.
- For exams scheduled at the hospital: If you have not pre-registered, please go to Patient Registration, located near the main entrance to the hospital, 30 minutes prior to your scheduled exam appointment to be registered for your exam.
- If you are diabetic, inform staff and take your medications as you would normally.
- We want our patients to be as comfortable as possible while having tests performed. However, we ask that you not bring children with you unless you have an adult to watch and care for them while you are having your procedure.
- Pediatric patients must be accompanied by either a parent or legal guardian in order to receive care.