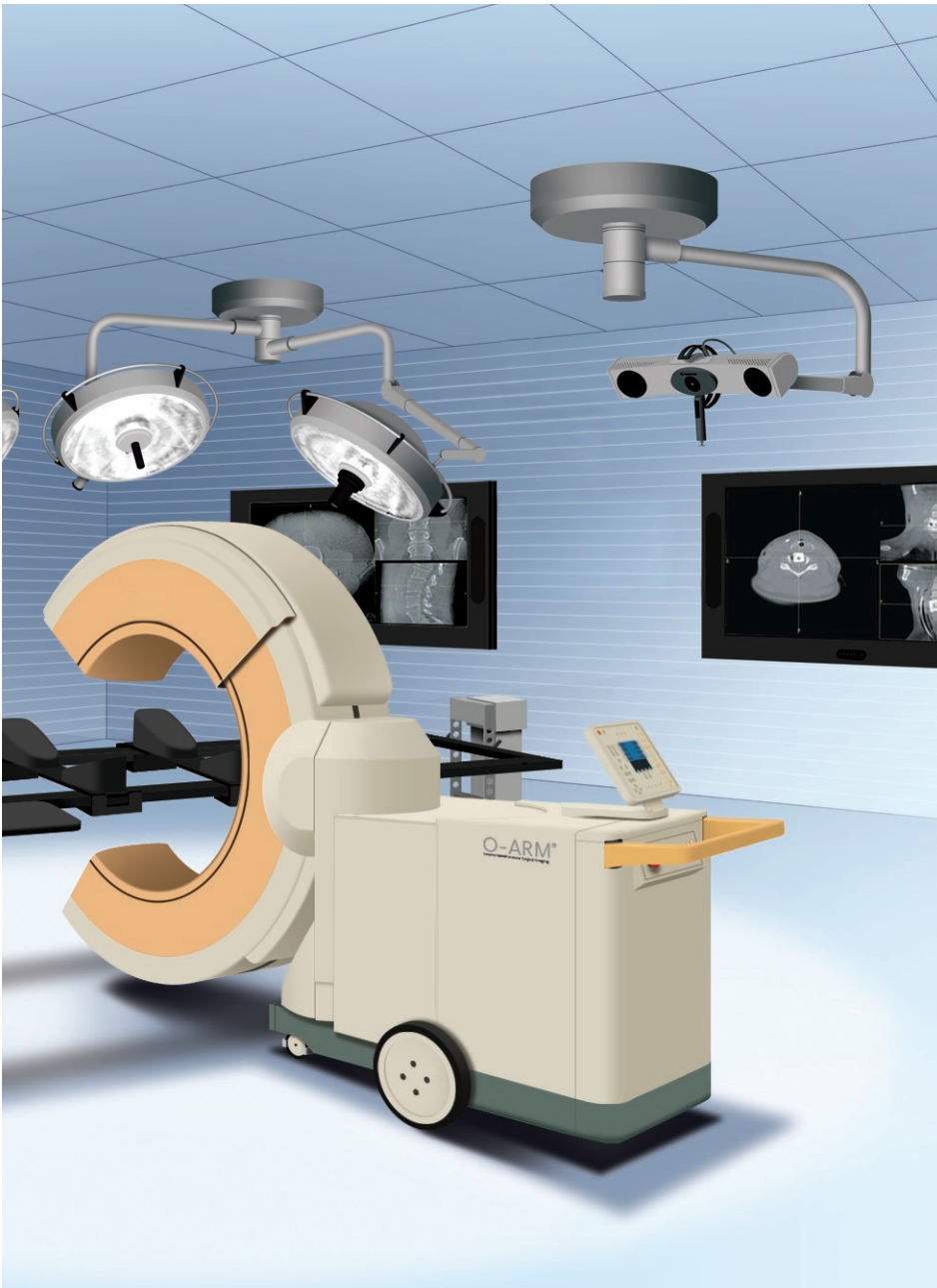
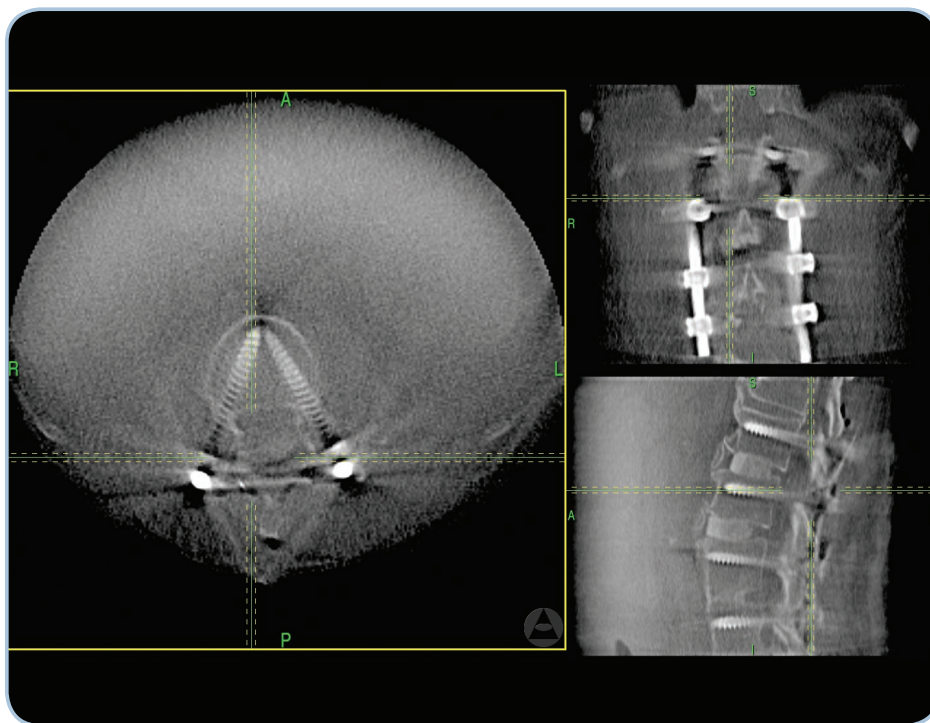
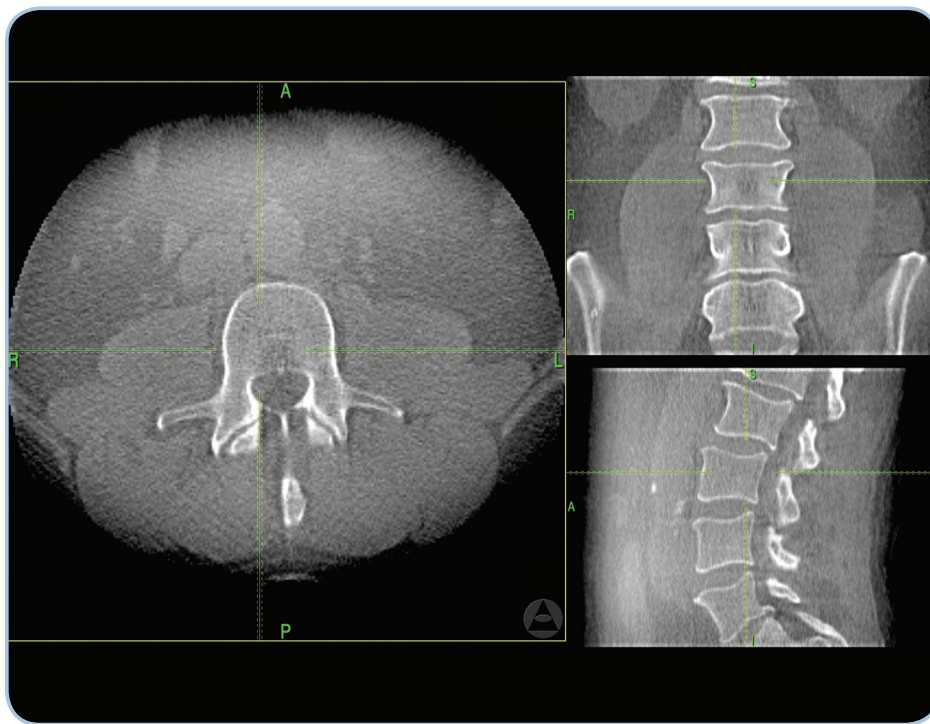


O-ARM[®]

Complete Multidimensional Surgical Imaging System



- A mobile imaging platform optimized for spine and orthopaedic surgery
- Telescoping "O"-shaped gantry allows for 2-D fluoroscopy and 3-D imaging
- Automated positioning for ease of use
- Digital flat panel detector provides larger field of view



ONLY THE O-ARM® SYSTEM OFFERS COMPLETE MULTIDIMENSIONAL SURGICAL IMAGING

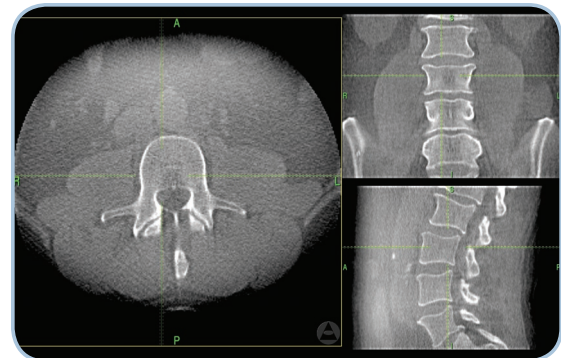
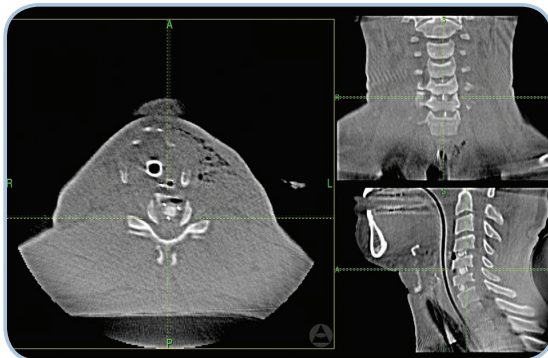
The O-ARM® Complete Multidimensional Surgical Imaging System combines the best features of a traditional C-arm with an intraoperative 3-D scanner for exceptional surgical imaging.

- 3-D, multi-plane 2-D, and fluoroscopic imaging capability
- Lateral patient access without compromising mobility
- Faster imaging with reduced dosage through robotically controlled real-time and preset positioning

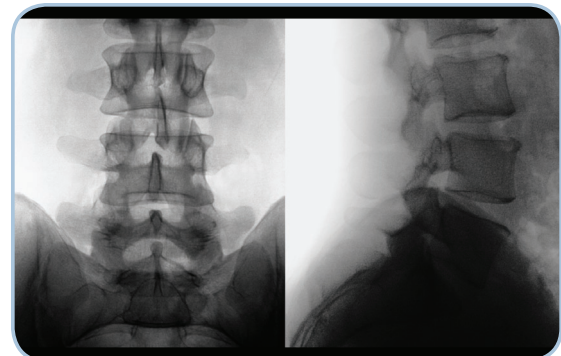
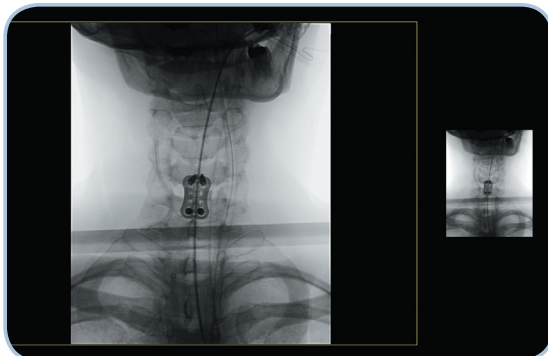
CERVICAL

LUMBAR

3-D



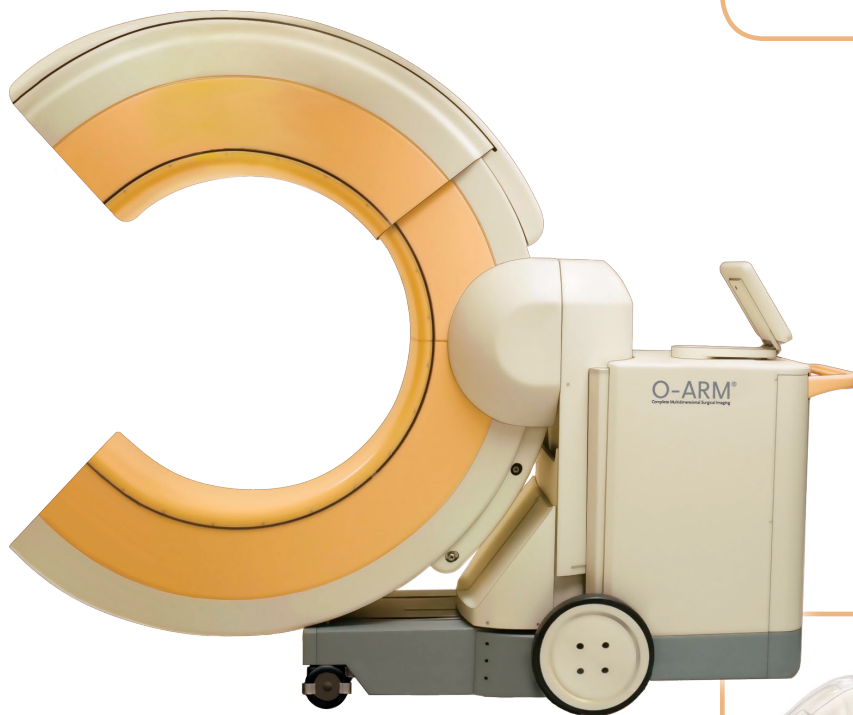
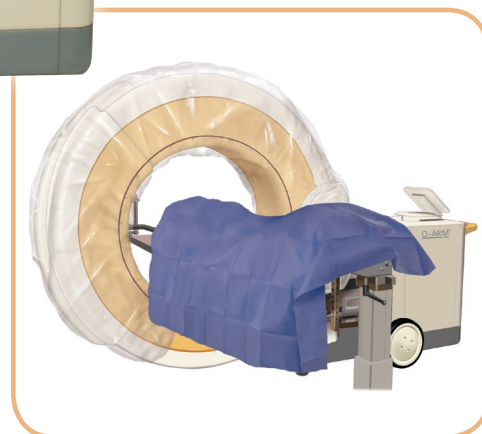
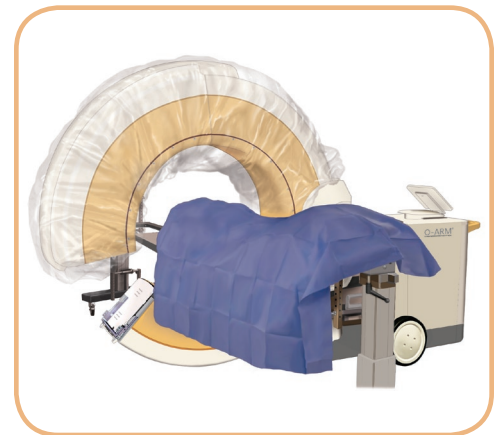
2-D



THE IMAGING PLATFORM TRULY DESIGNED FOR SURGERY

With the advancement of minimally invasive procedures, traditional C-arms do not completely address the imaging needs of the OR and intraoperative CT scanners do not offer lateral patient access or 2-D modalities.

- Patented telescoping gantry section enables lateral patient access
- Specially designed to maintain sterility and safety



SURGEON ACCESS



- Robotic movements enable gantry to move to preset positions
- Park position gives the surgeon unfettered access to the surgical field
- Return from park to imaging position in seconds with the push of a button



Straight



Tilt



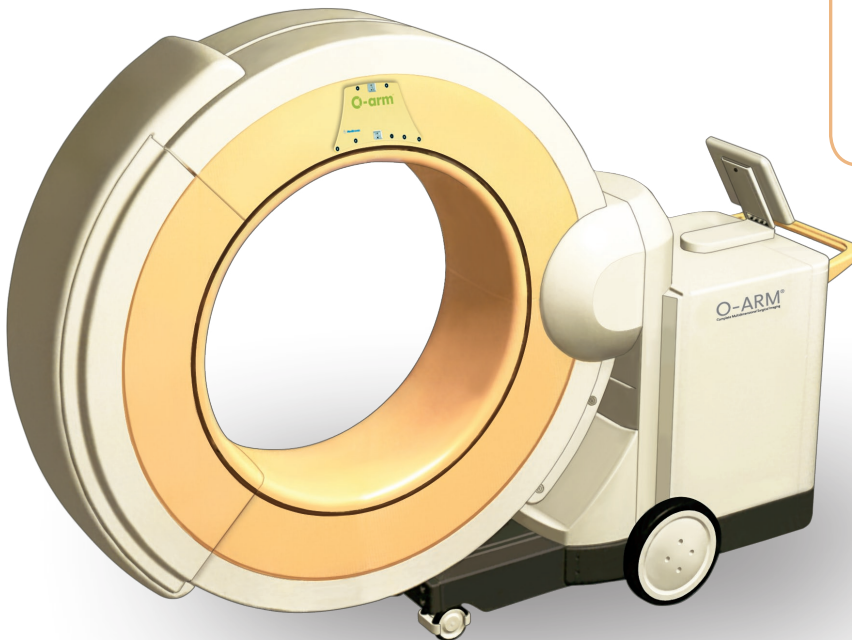
Iso-Wag™ System



Park

HIGH RESOLUTION IMAGING

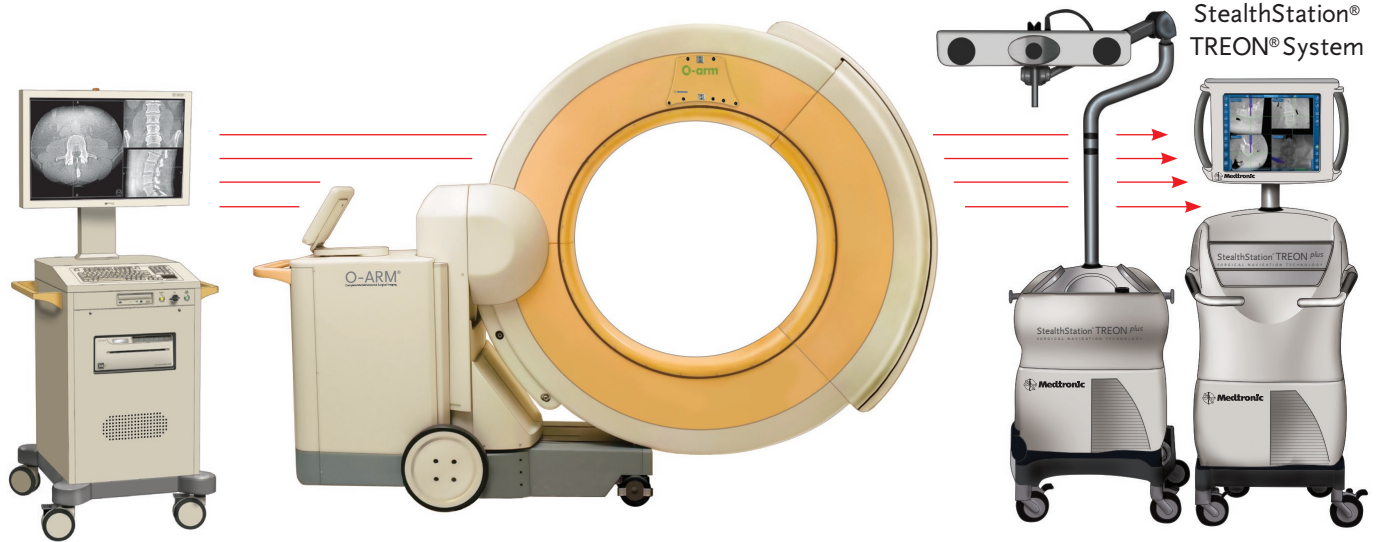
- 2K x 1.5K (3 megapixel) digital flat panel detector enables higher dynamic range and higher spatial resolution for greater accuracy
- 30-inch flat panel display viewing station for 16:9 aspect ratio, high-definition images
- Multi-plane imaging eliminates manual repositioning and need for a second system
- User control of image display from viewing station or handheld wireless, sterile mouse



O-ARM® System
Mobile View Station

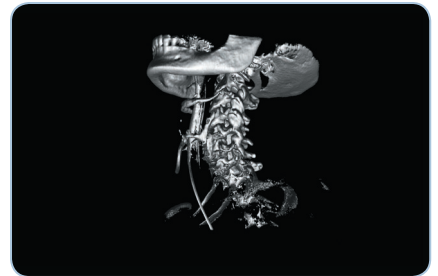
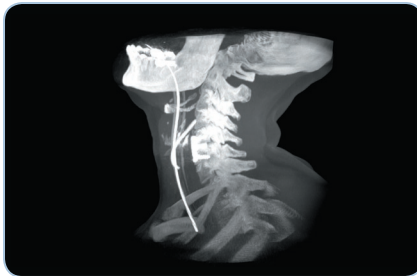
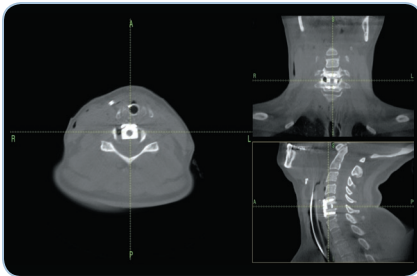


O-ARM® SYSTEM IGS INTERFACE



- The O-ARM imaging system represents the seamless integration of intra-operative imaging with image guided surgery.
- 3-D image data set includes patient reference and is automatically transferred to the StealthStation® TREON® System
- Upon a 3-D acquisition, both the 3-D data set as well as an AP and lateral image are registered and sent to the StealthStation® TREON® System

IMAGE GALLERY



listen. respond. deliver.

Medtronic Navigation
826 Coal Creek Circle
Louisville, CO 80027
USA
Internet: www.medtronicnavigation.com
Toll-free: (888) 580-8860
Telephone: +(720) 890-3200
Fax: +(720) 890-3500

©2007 Medtronic Navigation.
All Rights Reserved.
04/07
9670865

*Patent Numbers 6,940,941; 7,108,421; 7,001,045;
7,106,825, other Patents Pending.

